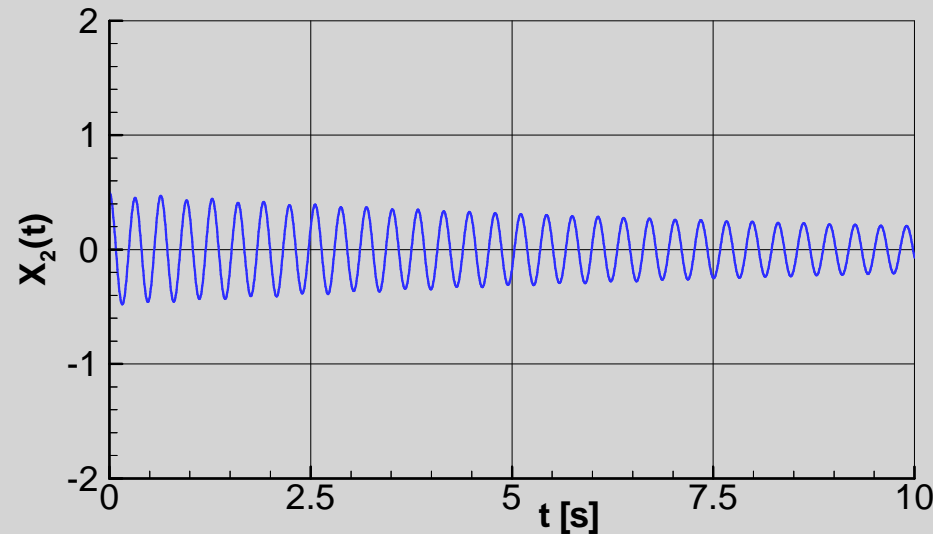
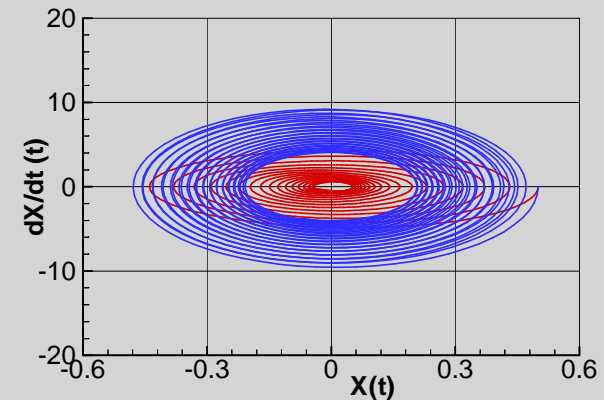
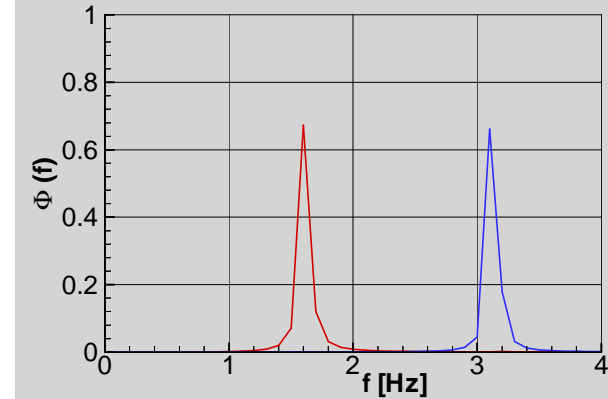
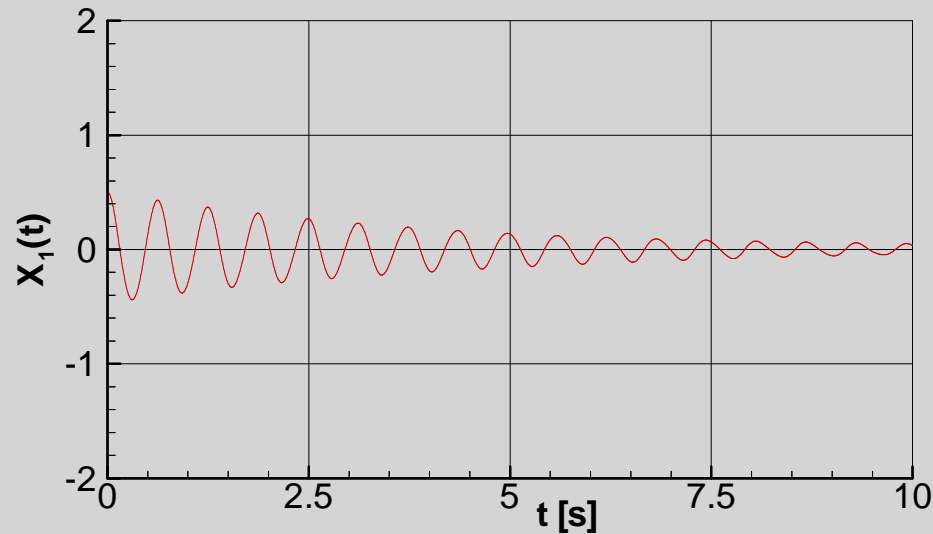


# FLT2DQ - System of 2 DOFs including Airloads



FLT2DQ.INP - Minimum input file

07.07.04 20:31

Author: Wolfgang Send - AE

## Parameters:

$Y_{01} = 0.50 \text{ m}$ ,  $Y_{01}^* = 0.00 \text{ m/s}$ ,  $t_A = 0.00$

$Y_{02} = 0.50 \text{ m}$ ,  $Y_{02}^* = 0.00 \text{ m/s}$ ,  $t_E = 10$

$M_1 = 1.000 \text{ kg}$ ,  $M_2 = 1.000 \text{ kg}$ ,  $S_m = 0.100 \text{ kg}$

$D_1 = 0.000 \text{ kg/s}$ ,  $D_2 = 0.000 \text{ kg/s}$

$K_1 = 100. \text{ kg/s}^2$ ,  $K_2 = 400. \text{ kg/s}^2$

$K_m = 0.000\text{E}+00 \text{ kg/s}^2$ ,  $f_s = 10.0 \text{ N/m}$

$f_{01} = 1.589 \text{ Hz}$ ,  $f_{02} = 3.204 \text{ Hz}$ ,  $\kappa = 0.000 \text{ kg/s}^2$

$a_0 = 0.00 \text{ N}$ ,  $f_0 = 0.00 \text{ Hz}$ ,  $\phi = 0.0 \text{ [deg]}$

$\omega^* = 0.200 \text{ [-]}$ ,  $\xi_p = 0.500 \text{ [-]}$ ,  $Ma = 0.000 \text{ [-]}$